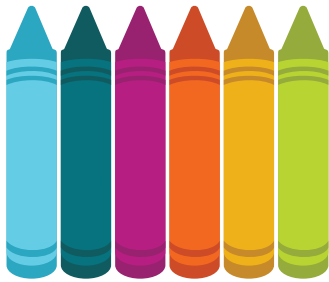


# WHAT CONCERNS US IN CENTRAL QUEENSLAND

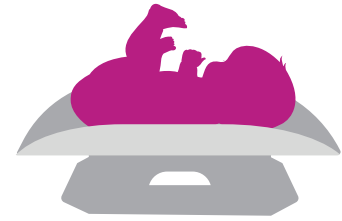
**30.7%** OF CQ CHILDREN ARE OVERWEIGHT / OBESE



KINDY PARTICIPATION 2018

ALL **97.3%** INDIGENOUS **80.9%**

These figures are improving steadily each year, but more work needs to be done to close the gap.



**6.7%** of CQ babies have a low birthweight (< 2500g)

**16.6%** of CQ mums smoke during pregnancy.



**20.9%**

of CQ households have a weekly household income of \$650 or less.

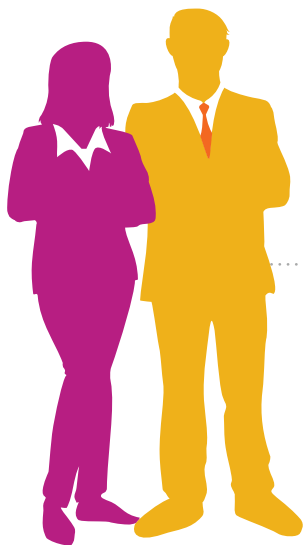


The rate of teen pregnancy (15-19 year olds) in CQ is:

**19.4 PER 1000 BIRTHS WOMEN**



Teen pregnancy occurs more frequently in people from:



**9.3%**

of CQ households had rent payments greater than or equal to 30% of household income.

**13.6%** Youth Unemployment Central Queensland

**12.6%** Youth Unemployment Queensland

- Remote and rural locations
- Low Socio-economic circumstances
- Or are Aboriginal or Torres Strait Islander

Every Child deserves every chance to reach their full potential

Statistics and figures sourced from publicly available data of CQHHS, AEDC, ABS and Government.